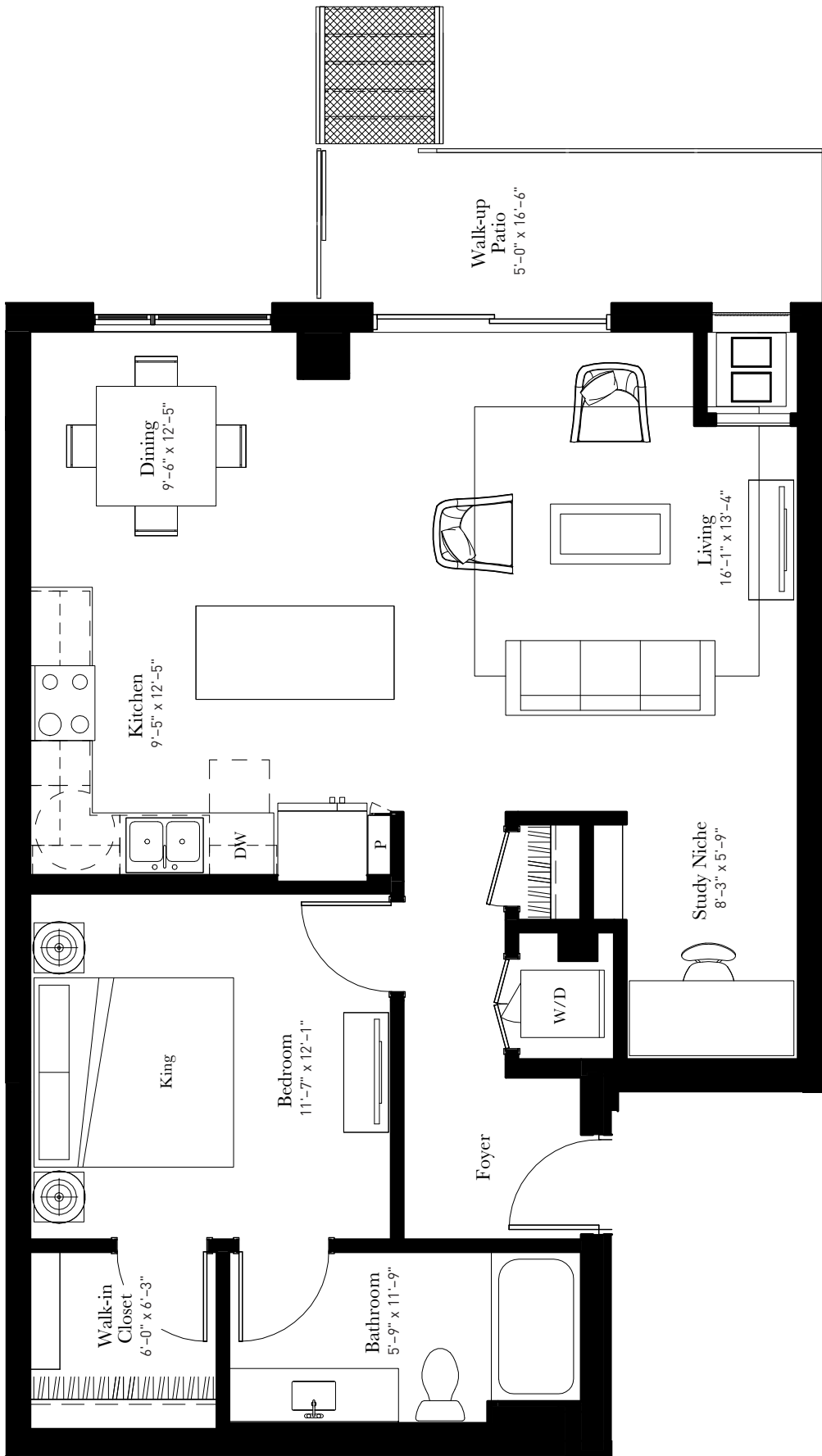


Wintergreen (A14)

1 Bed | 1 Bath
926 sq. ft.

The Wintergreen has space to live, work, and play. The corner kitchen with island and walk-up patio make cooking and entertaining easy. Plus there's a niche perfect for a desk. Then relax in the bedroom with attached bath and a walk-in closet with abundant space for your entire wardrobe.



651-369-9913 | 9000 City Place Blvd. | Woodbury, MN 55125 | LiveAspireAtCityPlace.com

All floor plans are artist's renderings for illustrative purposes and may not be to scale. All dimensions and distances are approximate and may vary. All photos and views are approximate representations and may not depict actual product. Not all features are available in every residence. All specifications, availability, and pricing are subject to change.