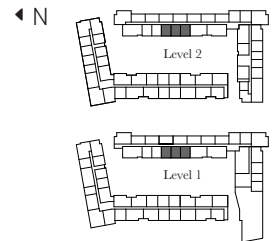
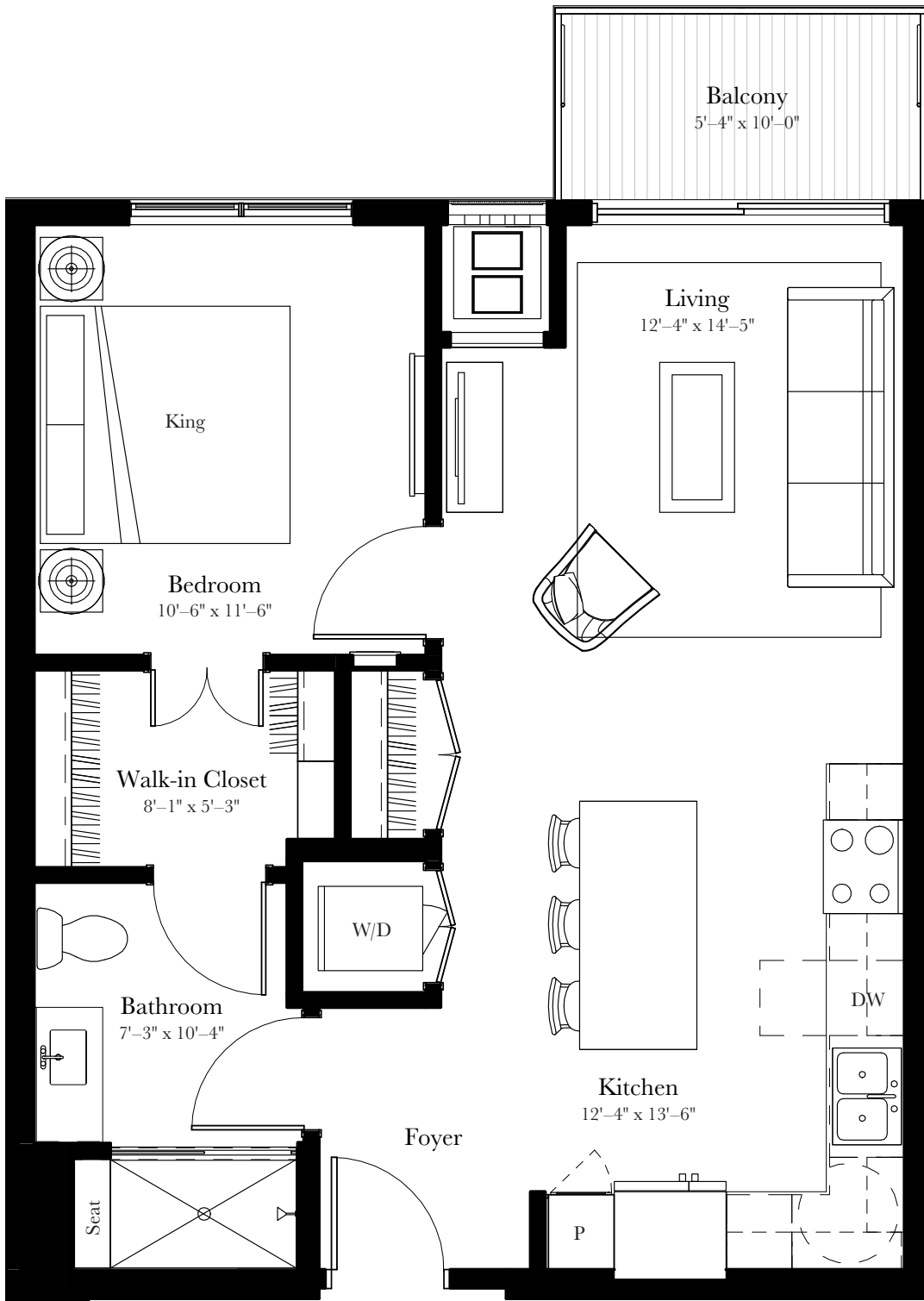


Signature Lupine (A15.2s)

1 Bed | 1 Bath
692 sq. ft.

This chef-caliber kitchen with island seating flows naturally into the living space out through the balcony. Retreat from the day in the spacious bedroom with a large pass-through closet and premium bath with tiled shower.



651-369-9913 | 9000 City Place Blvd. | Woodbury, MN 55125 | LiveAspireAtCityPlace.com

All floor plans are artist's renderings for illustrative purposes and may not be to scale. All dimensions and distances are approximate and may vary. All photos and views are approximate representations and may not depict actual product. Not all features are available in every residence. All specifications, availability, and pricing are subject to change.