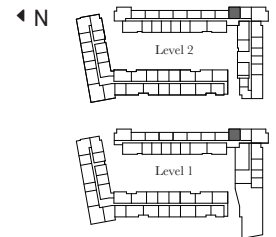
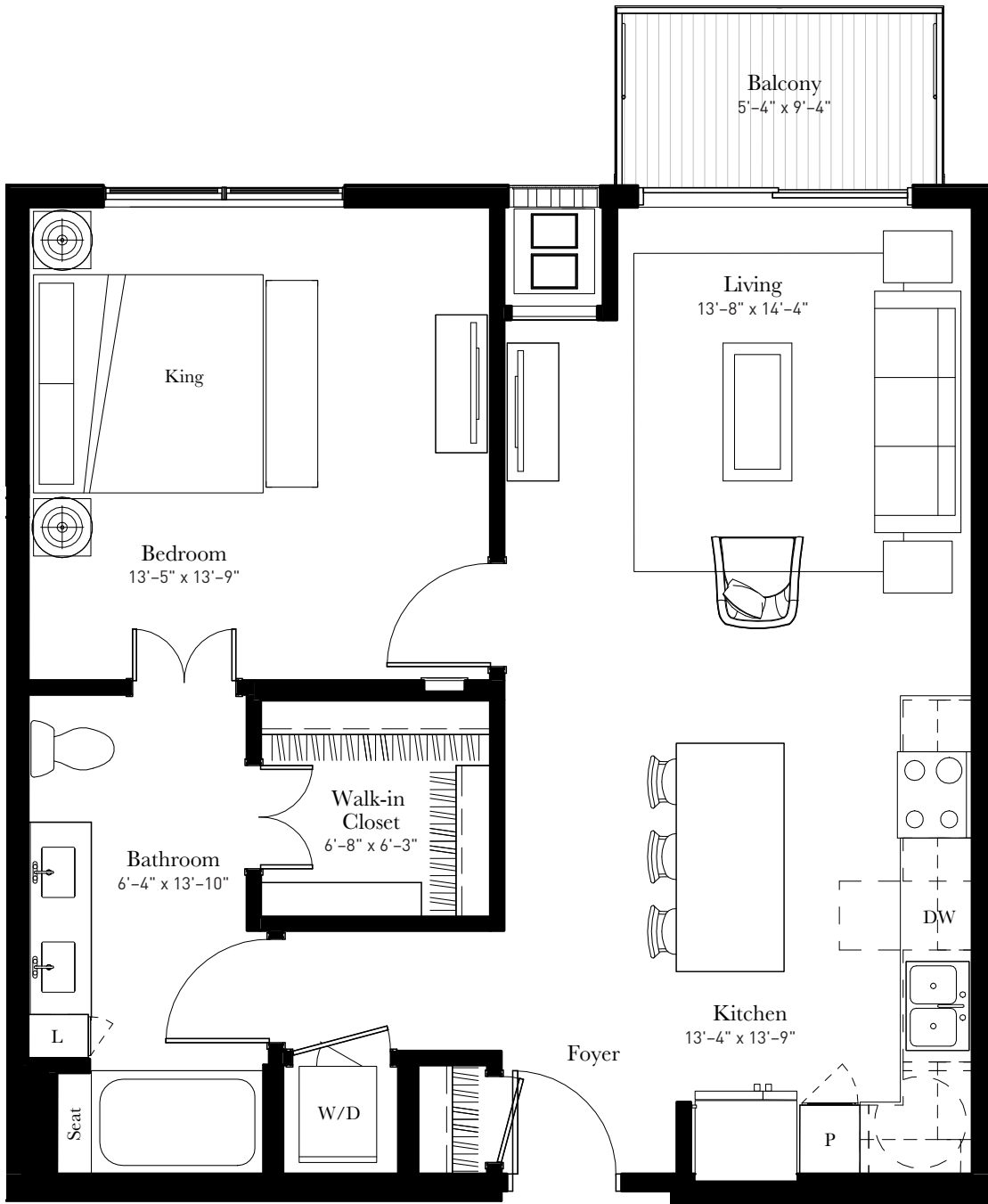


Signature Aster (A7.2s)

1 Bed | 1 Bath
817 sq. ft.

The Signature Aster makes life a breeze. The spacious corner kitchen with island seating flows into the living space and out to the balcony. Kick back and relax in the master suite and bath with dual vanities, tub/shower combo, and walk-in closet with abundant space for your entire wardrobe.



651-369-9913 | 9000 City Place Blvd. | Woodbury, MN 55125 | LiveAspireAtCityPlace.com

All floor plans are artist's renderings for illustrative purposes and may not be to scale. All dimensions and distances are approximate and may vary. All photos and views are approximate representations and may not depict actual product. Not all features are available in every residence. All specifications, availability, and pricing are subject to change.