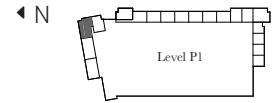
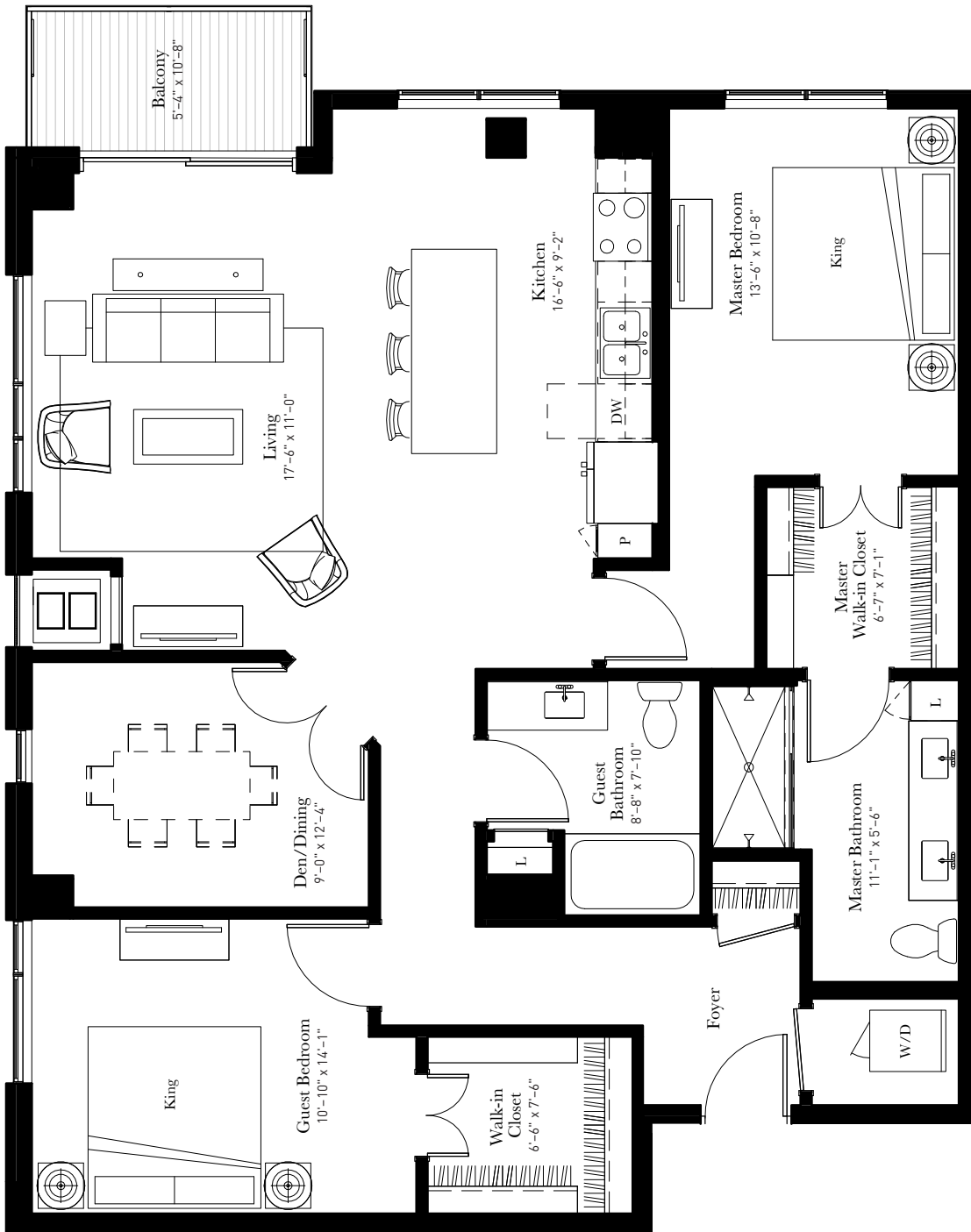


## Boneset (B17)

2 Bed + Den | 2 Bath  
1,383 sq. ft.

This unique bright and spacious home is one of a kind. Complete with a large living room and kitchen, flex den or private dining space, and spacious bedrooms on either side of the floor plan, this corner unit offers comfortable living space in all the right places.



651-369-9913 | 9000 City Place Blvd. | Woodbury, MN 55125 | [LiveAspireAtCityPlace.com](http://LiveAspireAtCityPlace.com)

All floor plans are artist's renderings for illustrative purposes and may not be to scale. All dimensions and distances are approximate and may vary. All photos and views are approximate representations and may not depict actual product. Not all features are available in every residence. All specifications, availability, and pricing are subject to change.