

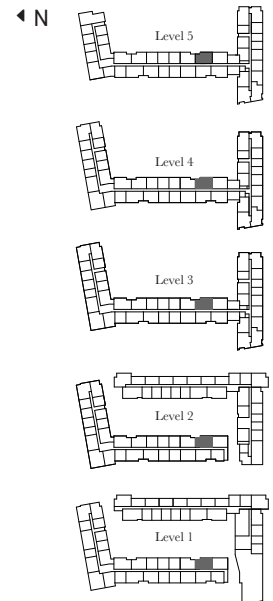
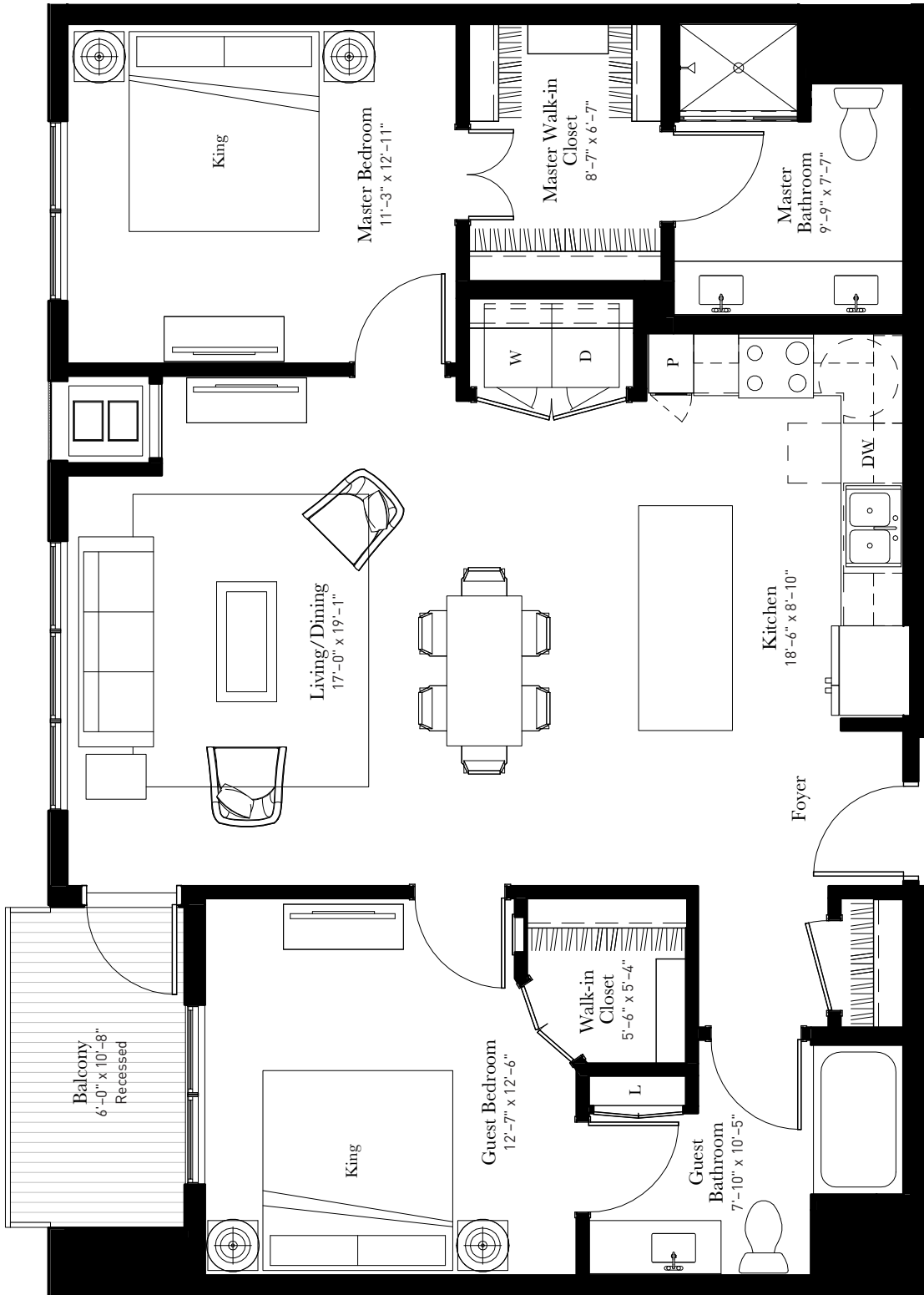


ASPIRE
AT CITYPLACE

Hyssop (B9.1)

2 Bed | 2 Bath
1,168 sq. ft.

Get it all with the Hyssop. Featuring expansive living, dining, and relaxation spaces plus a large master suite with dual sinks and closet space to meet every need. Complete with a second bedroom and two entrances to the second bathroom.



651-369-9913 | 9000 City Place Blvd. | Woodbury, MN 55125 | LiveAspireAtCityPlace.com

All floor plans are artist's renderings for illustrative purposes and may not be to scale. All dimensions and distances are approximate and may vary. All photos and views are approximate representations and may not depict actual product. Not all features are available in every residence. All specifications, availability, and pricing are subject to change.